

# **Adjectives to Adverbs**

# Adverbs



The job of an adverb is to **tell you more about a verb**. An adverb tells you where, why, when or how often something is happening.

Can you spot the adverbs in these sentences?

Adverb Girl flew quickly to the rescue.

She secretly pressed her superpower belt.

# Adverbs – ANSWERS!



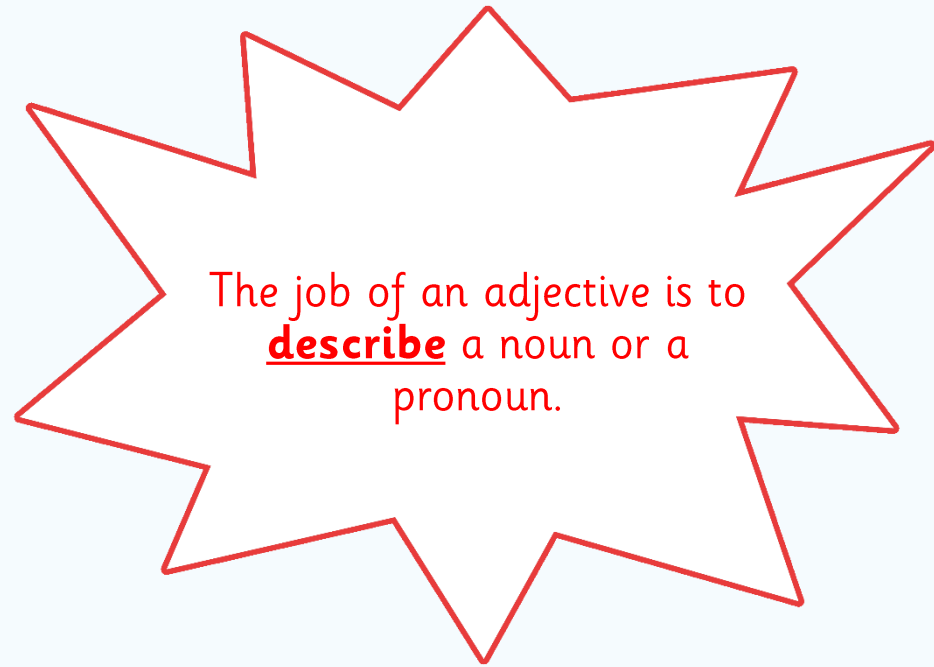
The job of an adverb is to **tell you more about a verb**. An adverb tells you where, why, when or how often something is happening.

Can you spot the adverbs in these sentences?

Adverb Girl flew **quickly** to the rescue.

She **secretly** pressed her superpower belt.

# Adjectives



Can you spot the adjectives in these sentences?

Adjective Man is strong and powerful.

He wears a black, green and gold outfit.

# Adjectives – ANSWERS!



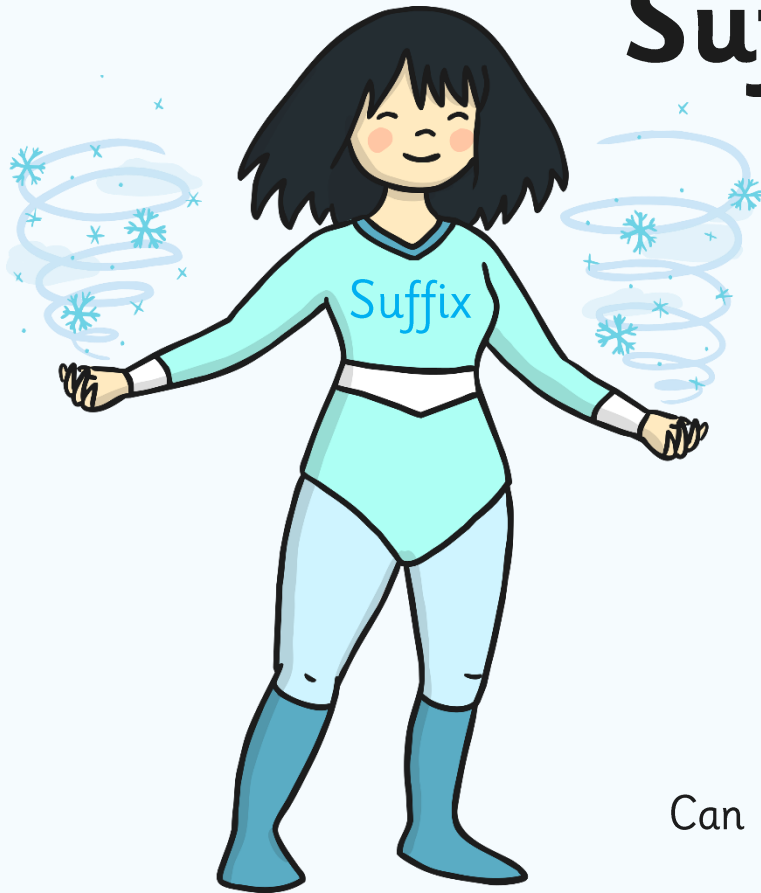
The job of an adjective is to describe a noun or a pronoun.

Can you spot the adjectives in these sentences?

Adjective Man is strong and powerful.

He wears a black, green and gold outfit.

# Suffixes



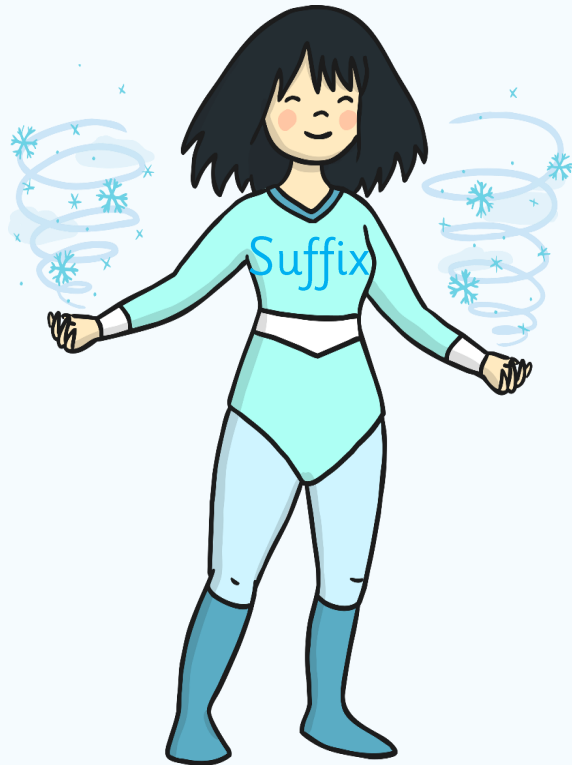
A suffix is an **ending**,  
used at the end of one  
word to turn it into  
another word.

Can you spot the suffix -ly in these sentences?

Suffix Girl cleverly thought of a plan.

She would bravely creep up and spy on Adjective Man.

# Suffixes – ANSWERS!



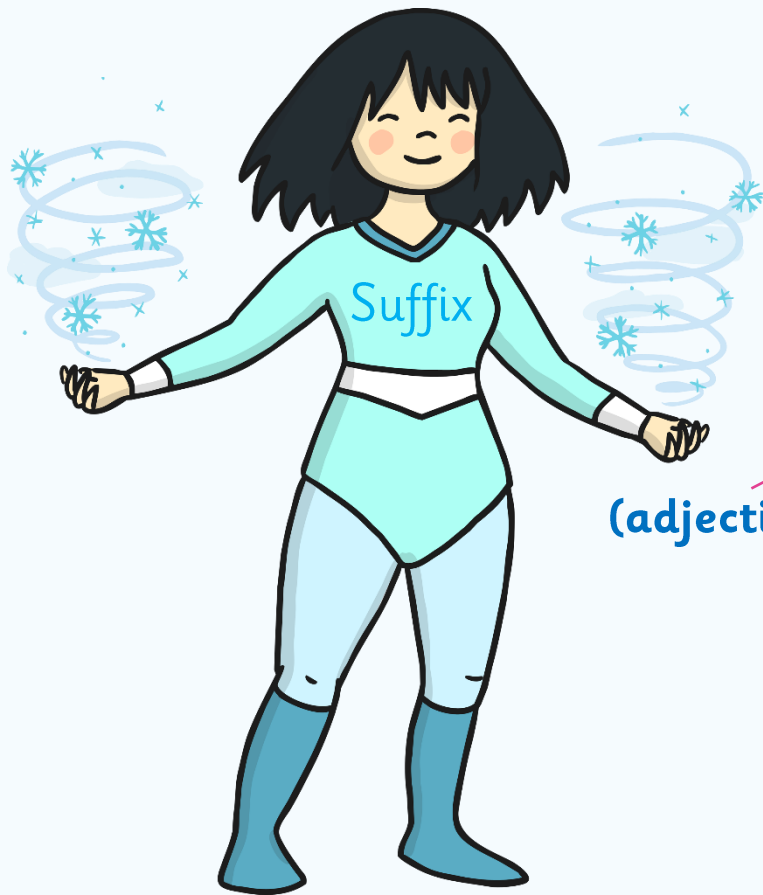
A suffix is an 'ending',  
used at the end of one  
word to turn it into  
another word.

Can you spot the suffix -ly in these sentences?

Suffix Girl cleverly thought of a plan.

She would bravely creep up and spy on Adjective Man.

# Changing Adjectives to Adverbs



A suffix is a group of letters that we add to the end of a word. A suffix may change the meaning of a word or change the job that a word does.

**brave** + **ly** = **bravely**

(adjective) → (suffix) → (adverb)

Example

Suffix Girl is brave.

Suffix Girl bravely rescues people.

Through adding the suffix **-ly** we have changed the adjective 'brave' into the adverb 'bravely'.



# Changing Adjectives to Adverbs



Adjective (root word)	Adverb with the suffix -ly
sad	sadly
kind	kindly
weak	weakly



Unlike root words, suffixes cannot stand on their own as a complete word.

Look at what happens when the root word adjective is changed into an adverb.

Spelling Rule –

**In most cases** the suffix 'ly' is added straight on to the root word.

# Changing Adjectives to Adverbs



Adjective (root word)	Adverb with the Suffix -ly
happy	happily
gentle	gently
frantic	frantically



If the root word ends in y with a consonant letter before it, the y is changed to i, but only if the root word has more than one syllable.

**happy = happily**

**angry = angrily**

If the root word ends with le, remove -le and then add -ly.

**gentle = gently**

**simple = simply**

If the root word ends with ic, -ally is usually added.

**basic = basically**

**frantic = frantically**

Common exceptions to the rules: **truly, duly, wholly, publicly.**